

PRODUCT DATA SHEET

Product: Anti-MRP1 mAb, clone MRPr1

Cat. No.: MC-201 (1 mL)
MC-160 (0.5 mL)

Specificity:

MRPr1 reacts with an epitope of Multidrug Resistance Protein 1 (MRP1, ABCC1), a 180-195 kDa transmembrane transporter protein overexpressed in various human non-P-glycoprotein MDR tumor cell lines. MRPr1 does not cross-react with human *MDR1* or *MDR3* gene products.

Species Reactivity:

Human. Others not tested.

Ig Isotype:

Rat IgG_{2a}

Immunogen:

Bacterial fusion protein of MRP containing a segment of 168 amino acids located in the amino-proximal half of the protein.

Hybridoma:

Mouse myeloma (SP2/0) fused with immunized rat (outbred Wistar strain) lymph node cells.

Format:

1 mL (>200 tests) or 0.5 mL (>100 tests) monoclonal antibody at ~250 µg IgG/mL in serum-free tissue culture supernatant with protein stabilizer and 0.1% sodium azide. Filtered through a 0.22 µm filter.

Culture medium: RPMI-1640, supplemented with Nutridoma-SR. The medium does not contain serum or added enzymes.

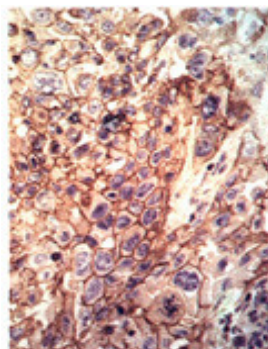
Storage:

Store at 4°C for short term. Aliquot and store at -20°C for long term. Avoid repeated freeze/thaw cycles.

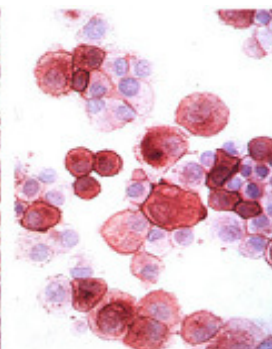
Applications and Suggested Dilutions:

- Flow cytometry: After fixing cells in 10% (v/v) Lysing solution, use MRPr1 at a 1:20-1:50 dilution followed by FITC-conjugated anti-rat IgG secondary antibody.
- Immunocytochemistry: For acetone-fixed cell preparation use at a 1:20-1:50 dilution.
- Immunohistochemistry: For acetone-fixed frozen sections, use at a 1:20-1:50 dilution. For formalin-fixed, paraffin-embedded tissues, use at a 1:20 dilution. For paraffin-embedded sections, a 0.01 M citrate pretreatment for 10 min. at 100°C may increase the performance of MRPr1.
- Western blot: Use at a 1:20-1:50 dilution, followed by anti-rat-HRP.

The optimal dilution for a specific application should be determined by the researcher.



MRPr1 staining on frozen section of ovarian carcinoma



MRPr1 staining on adriamycin-selected GLC4/ADR small-cell lung carcinoma cells

Limitations:

For *in vitro* research use only. Not for use in diagnostics or in humans.

Warranty:

No warranties, expressed or implied, are made regarding the use of this product. KAMIYA BIOMEDICAL COMPANY is not liable for any damage, personal injury, or economic loss caused by this product.