

PRODUCT DATA SHEET

Product: Anti-BCRP mAb, clone BXP-34

Cat. No.: MC-226 (1 mL)

Specificity:

BXP-34 reacts with an internal epitope of Breast Cancer Resistant Protein (BCRP, ABCG2), a 70 kDa transmembrane half-transporter which is involved in multidrug resistance. It does not cross-react with the human *MDR1*, *MRP1*, *MRP2* or *MRP5* gene products.

Species Reactivity:

Human. Others not tested.

Ig Isotype:

Mouse IgG₁

Immunogen:

The mitoxanthrone resistant, BCRP-overexpressing cell line MCF7 MR.

Format:

1 mL monoclonal antibody at 250 µg/mL in PBS with protein stabilizer and 0.1% sodium azide.

Storage:

Store at 4°C for short term. Aliquot and store at -20°C for long term. Avoid repeated freeze/thaw cycles.

Applications and Suggested Dilutions:

- Western blot: **NOT reactive.**
- Immunohistochemistry: Use at a 1:20 dilution on acetone-fixed frozen sections followed by incubation with rabbit anti-mouse IgG and a monoclonal mouse APAAP complex. BXP-34 **cannot** be used on formaldehyde-fixed paraffin-embedded human tissues and tumors.
- Flow cytometry: Use at a 1:20 dilution. Permeabilization required.

The optimal dilution for a specific application should be determined by the researcher.

Intracellular Localization of BCRP in normal human tissues

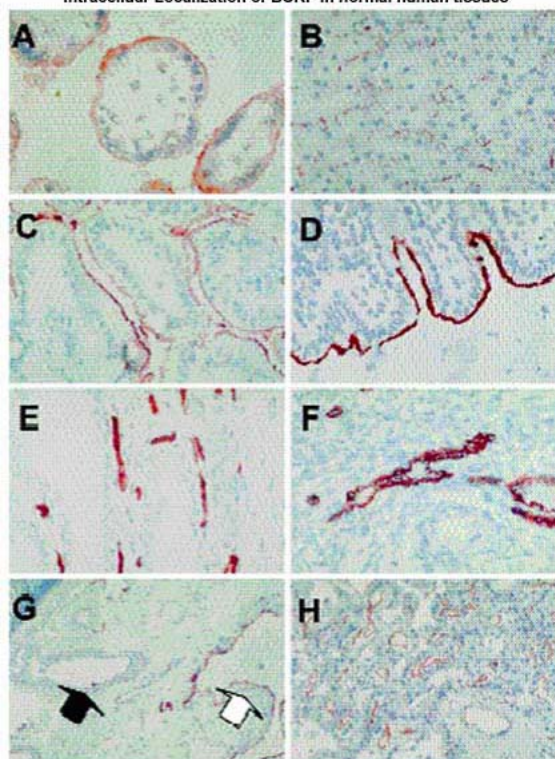


Fig. 2 BCRP staining of cryosections of human tissue using the BXP-21 (D and H) or BXP-34 (A-C, E-G) mAb. A, placenta (3100); B, liver (3100); C, small intestine (3100); D, colon (3100); E, prostate (3100); F, ovary (3100); G, vein (white arrow) and artery (black arrow) in the submucosa of the stomach (333); H, choroid plexus (3100). Color development was with AEC.

Limitations:

For *in vitro* research use only. Not for use in diagnostics or in humans.

Warranty:

No warranties, expressed or implied, are made regarding the use of this product. KAMIYA BIOMEDICAL COMPANY is not liable for any damage, personal injury, or economic loss caused by this product.