

PRODUCT DATA SHEET

Product: Anti-GST-Pi mAb, clone USa1-hGST-Pi-McAb-1

Cat. No.: MC-411 (100 µg)

Synonyms:

Glutathione S-transferase-Pi

Specificity:

Recognizes human, rat and leishmania GST-Pi. Does not cross-react with human or rat class alpha GST.

Species Reactivity:

Human, rat and leishmania. Others not tested.

Ig Isotype:

Mouse IgG₁

Immunogen:

Recombinant human placenta GST-Pi

Format:

100 µL of a 1 mg/mL solution of liquid Protein G-affinity purified monoclonal antibody containing 100 nM sodium azide and protein stabilizer.

Storage:

Store at 4°C short term and at -20°C long term. Aliquot to avoid freeze/thaw cycles.

Applications and Suggested Dilutions:

- Western blot: Use at a 1:150-1:1,000 dilution.
- Immunohistochemistry: Frozen sections use at a 1:100 dilution.
- Positive Control: Use rat hepatocarcinoma.

The optimal dilution for a specific application should be determined by the researcher.

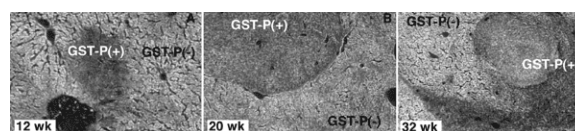


Figure 1: Immunohistochemistry of rat liver at 12, 20 or 32 weeks after initiation of liver carcinogenesis. GST-Pi-positive tissue was stained with anti-GST-Pi monoclonal antibody (MC-411) in a 30 µm thick rat liver slice. Original magnification 4X.

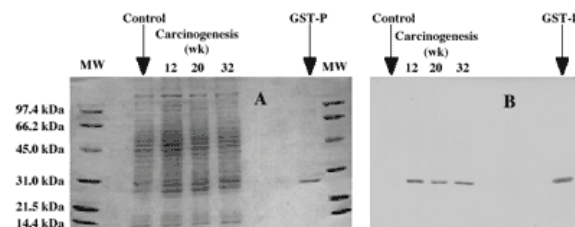


Figure 2: Left: Polyacrylamide gel electrophoresis (SDS-PAGE) and Coomassie brilliant blue staining of molecular weight standard (MW), pure GST-Pi protein and liver homogenate (5 µg protein) from normal rat liver (Control) or from liver tissue containing neoplastic lesions at different time points during hepatocarcinogenesis. Right: Western blot using anti-GST-Pi monoclonal antibody (MC-411).

Limitations:

For *in vitro* research use only. Not for use in diagnostics or in humans.

Warranty:

No warranties, expressed or implied, are made regarding the use of this product. KAMIYA BIOMEDICAL COMPANY is not liable for any damage, personal injury, or economic loss caused by this product.