

## PRODUCT DATA SHEET

**Product:** Anti-Bcl-w, clone 13F9

**Cat. No:** MC-501 (100 µg)

**Specificity:**

Recognizes human, mouse, rat, monkey and dog Bcl-w.

**Ig Isotype:**

Rat IgG<sub>2a</sub>

**Immunogen:**

Recombinant poly-histidine tagged full-length human Bcl-w.

**Format:**

100 µg of protein G purified antibody in PBS containing 0.02% sodium azide. Concentration is 1 mg/mL IgG.

**Storage:**

Store at 4°C for short term. Store at -20°C for long term. Aliquot to avoid freeze/thaw cycles.

**Applications:**

- Immunoprecipitation: Excellent
- Western blot

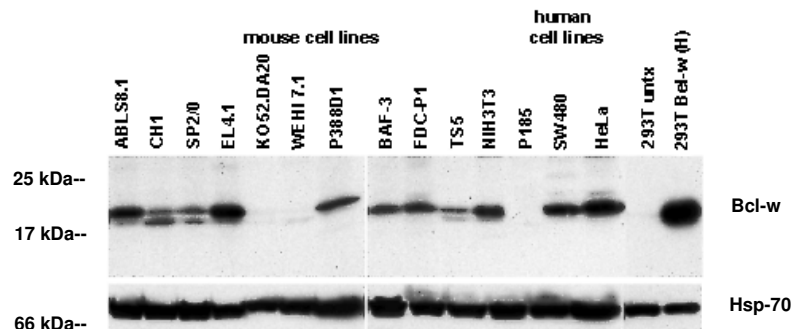
The optimal dilution for a specific application should be determined by the researcher.

**Limitations:**

For *in vitro* research use only. Not for use in diagnostics or in humans.

**Warranty:**

No warranties, expressed or implied, are made regarding the use of this product. KAMIYA BIOMEDICAL COMPANY is not liable for any damage, personal injury, or economic loss caused by this product.



IP/Western blot showing the detection of Bcl-w in human and mouse cell lines. Lysates from 10<sup>7</sup> cells were immunoprecipitated by clone 13F9 and the fractionated proteins were then blotted with the same antibody. Hsp-70 expression was used as an equal loading control and 293T cells transiently transfected with a human *bcl-w* expression construct were used as a positive control.