

## PRODUCT DATA SHEET

### Product: Anti-Cytochrome C, Polyclonal

**Cat. No:** PC-060 (100 µg)

**Background:**

Cytochrome C is an electron transport protein from mitochondria. It is released from mitochondria as an early event in apoptosis.

**Specificity:**

Antibody binds cytochrome C.

**Species Reactivity:**

Human, rat, rabbit, and dog. Other species not tested.

**Host:**

Sheep.

**Format:**

100 µg of affinity purified IgG. Provided as 0.2 µm sterile filtered solution in phosphate buffered saline with 0.08% sodium azide.

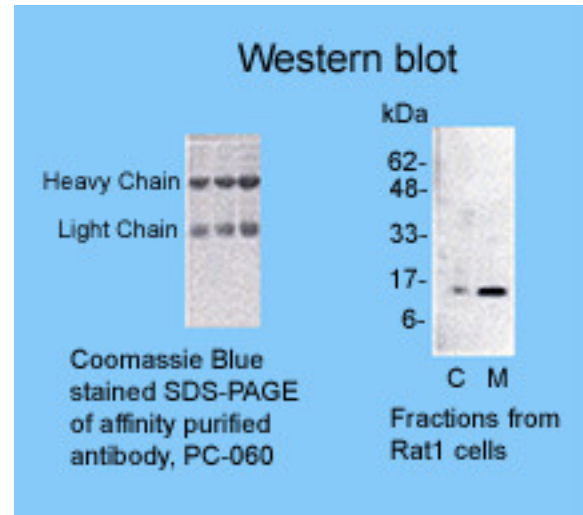
**Storage and Stability:**

Antibody should be distributed into aliquots and frozen at -20°C.

**Applications and Suggested Dilutions:**

- Immunofluorescence: May be used with human and rat cells.
- Immunoprecipitation: Empirical.
- Western blot: Use at 1:5000, shows a MW of 14.4kDa.

The optimal dilution for a specific application should be determined by the researcher.



**Limitations:**

For *in vitro* research use only. Not for use in diagnostics or in humans.

**Warranty:**

No warranties, expressed or implied, are made regarding the use of this product. KAMIYA BIOMEDICAL COMPANY is not liable for any damage, personal injury, or economic loss caused by this product.