

PRODUCT DATA SHEET

Product: Anti-EDG-1 (CT) Polyclonal

Cat. No: PC-085 (100 µg)

Background:

EDG-1 belongs to a family of G-protein coupled receptors whose ligands are lysophospholipids. The ligand for EDG-1 is sphingosine-1-phosphate. There are 8 known members of the EDG receptor family and they are implicated in mediating growth related effects such as induction of cellular proliferation, alterations in differentiation and survival and suppression of apoptosis. They also evoke cellular effector functions that are dependent on cytoskeletal responses such as contraction, secretion, adhesion and chemotaxis. EDG receptors are developmentally regulated and differ in tissue distribution. The couple to multiple types of G proteins to signal through ras and MAP kinase, rho, phospholipase C and several protein tyrosine kinases. EDG-1 is expressed in cardiovascular, leukocyte containing and other tissues.

Specificity:

Reacts with human endothelial cell differentiation gene 1 (C-terminal), EDG-1.

In Western blotting, detects an approximately 44 kDa band in RH7777 cells transfected with full length human EDG-1.

For positive control, use RH7777 cells transfected with full length EDG-1.

Species Reactivity:

Human, other species not tested.

Ig Isotype: IgG

Immunogen:

Synthetic peptide derived from the C-terminal of EDG-1 receptor.

Format:

Rabbit polyclonal antibody against human endothelial cell differentiation gene 1 (CT). 100 µl of 1 mg/ml purified antibody 0.2 µm sterile filtered in phosphate buffered saline with 0.08% sodium azide.

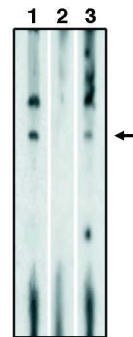
Storage and Stability:

Stable for up to 2 weeks at 4°C. Recommend storing at -20°C. Stable for one year when stored at -20°C. Avoid freeze/thaw cycles.

Applications and Suggested Dilutions:

■ Western blotting: Use at 5-10 µg/ml using a human EDG-1 receptor transfected cell line.

The optimal dilution for a specific application should be determined by the researcher.



Western blot
EDG-1 (CT)

Western blot analysis using anti-EDG-1 (CT) at 10 µg/ml on RH7777 cell lysates transfected with full length human EDG-1 receptors, lysates preincubated/blocked with specific EDG-1 peptide and lysates preincubated/blocked with non-specific control peptide.

Limitations:

For *in vitro* research use only. Not for use in diagnostics or in humans.

Warranty:

No warranties, expressed or implied, are made regarding the use of this product. KAMIYA BIOMEDICAL COMPANY is not liable for any damage, personal injury, or economic loss caused by this product.